

Product Overview

International Edition



Simply. Well. Connected.

Simply. Well. Connected.

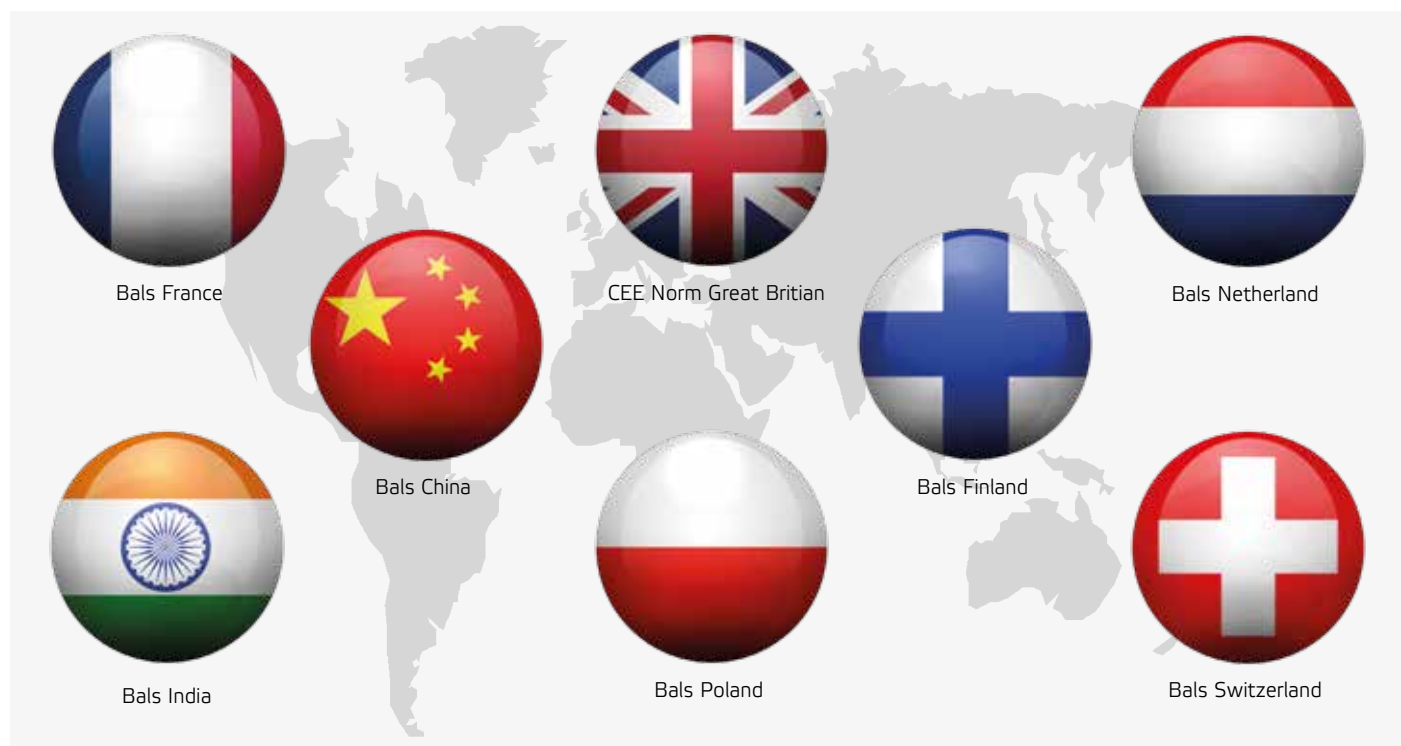
For more than 60 years, Bals has become a quality brand all over the world and is renowned for its innovation, reliability and service.

From day one, we have been producing CEE plugs and connectors for the world markets and focussed on the highest level of quality "Made in Germany". Our factories in Kirchhundem-Albaum and Freiwalde have highly skilled and motivated teams, the very latest manufacturing facilities and a highly efficient logistics system.

Our product portfolio ranges from plugs, phase inverters, connectors, sockets outlets and combinations units to special application devices. Numerous certifications from German and foreign certification institutes, as well as registered designs and patents, document the high technical standard of our products. A unique quality feature which has been developed exclusively by Bals is the maintenance-free Quick-Connect technology.



Factory in Kirchhundem-Albaum



Bals subsidiaris worldwide

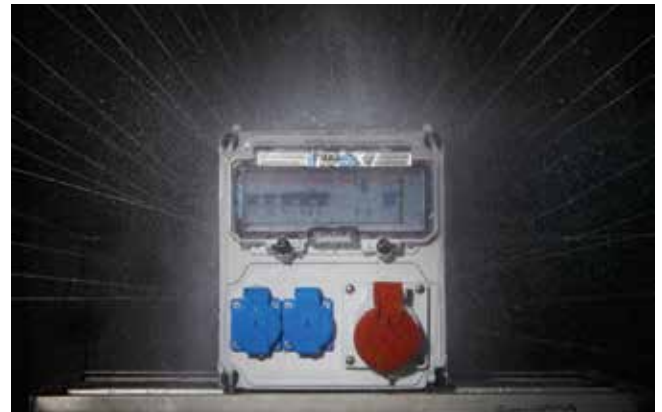
The ISO-9001-certified production process in all factories ensures the high product quality typical for which Bals is famous.

Modern injection moulding machines and automatic production lines guarantee the consistently high level of quality that you expect from a brand manufacturer.

Selected raw materials, a modern production process as well as continuous inspection and quality control ensure that you can rely on our combination units, plugs and sockets – one hundred percent, day by day, in every situation.

The high quality of the Bals devices, is reflected in their quality features:
break-proof, dimensionally stable, self-extinguishing, abrasion-, cold-, and heat-resistant.

Our presence in more than 80 countries worldwide means that we are always close to the needs of customers. Bals products are also approved in North America, China and South Africa and are therefore ideal for use worldwide.



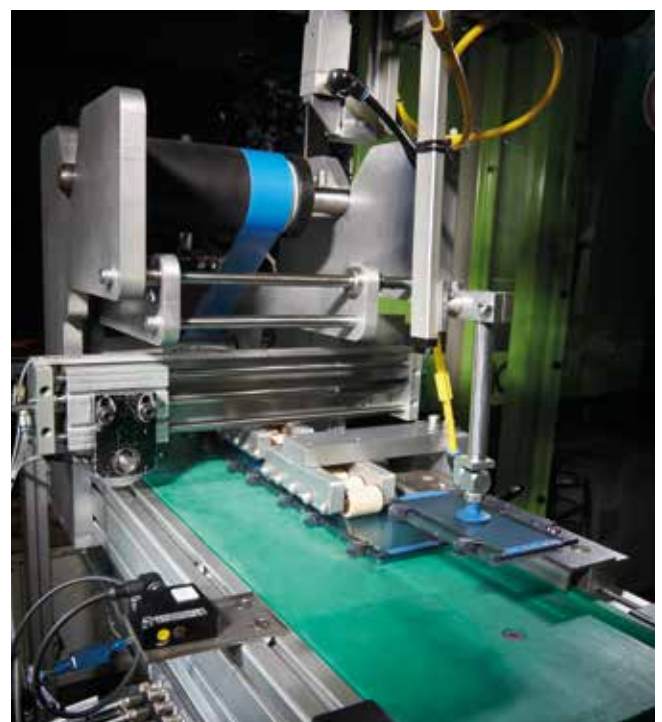
Splash-proof, water test in our own test lab



Automatic removal process on VARIABOX injection molding machine



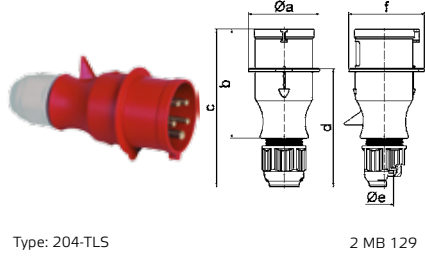
State-of-the-art assembly lines with integrated automatic testing machines



... and integrated removal function

TLS Plug with Multi-Grip

- Screw terminals
- Cable gland Multi-Grip system
- One-piece housing
- Protection degree IP44

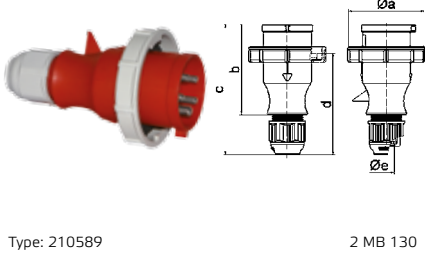


Type: 204-TLS

A	16	16	16	32	32	32	A	P	V	Art. No.	Qty
P	3	4	5	3	4	5					
a Ø	54,0	60,0	66,0	71,0	71,0	80,0	16	3	230	21001-TLS	10
b	94,5	98,0	101,0	115,0	115,0	119,0	16	4	400	21005-TLS	10
c	138,0	142,0	145,0	170,0	170,0	174,0					
d	101,5	105,5	108,5	124,0	124,0	128,0					
e Ø	18,0	18,0	18,0	23,0	23,0	23,0	16	5	400	203-TLS	10
f	56,6	64,0	71,0	76,0	76,0	85,0					
							32	3	230	21013-TLS	10
							32	4	400	21017-TLS	10
							32	5	400	204-TLS	10

TLS Plug with Multi-Grip

- Screw terminals
- Nickel plated contacts
- Cable gland Multi-Grip system
- One-piece housing
- Protection degree IP67

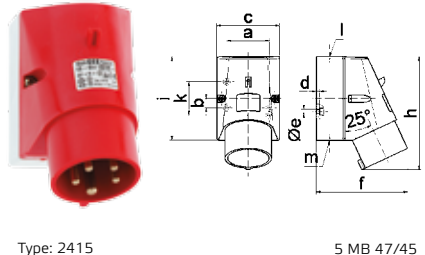


Type: 210589

A	16	16	16	32	32	32	A	P	V	Art. No.	Qty
P	3	4	5	3	4	5					
a Ø	70,0	78,0	86,0	94,0	94,0	101,0	16	3	230	210576	10
b	94,5	98,0	101,0	115,0	115,0	119,0	16	4	400	210583	10
c	138,0	142,0	145,0	170,0	170,0	174,0					
d	105,5	109,5	112,5	128,0	128,0	132,0					
e Ø	18,0	18,0	18,0	23,0	23,0	23,0	16	5	400	210589	10
							32	3	230	210594	10
							32	4	400	210601	10
							32	5	400	210607	10

Surface Mounting Appliance Inlet

- Screw terminals
- Protection degree IP44
- Cable entry 1x at top (open), 1x at bottom and 1x at rear (closed)

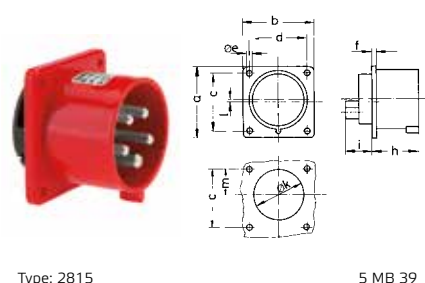


Type: 2415

A	16	16	16	32	32	32	A	P	V	Art. No.	Qty
P	3	4	5	3	4	5					
a	51,0	59,0	59,0	65,0	65,0	65,0	16	3	230	245	10
b	-	11,0	11,0	11,0	11,0	11,0					
c	64,0	75,0	75,0	83,0	83,0	83,0	16	4	400	249	10
d	4,0	4,0	4,0	6,5	6,5	6,5					
e Ø	4,1	5,1	5,1	5,5	5,5	5,5	16	5	400	2415	10
f	93,0	106,0	110,0	128,0	128,0	130,0					
h	122,0	135,0	135,0	165,0	165,0	166,0	32	3	230	24168	10
i	87,0	100,0	100,0	126,0	126,0	126,0					
k	40,0	-	-	-	-	-	32	4	400	24172	10
l	M20	M20	M20	M25	M25	M25					
m	for M20	for M20	for M20	2xM25	2xM25	2xM25	32	5	400	24144	10

Appliance Inlet with Flange

- Screw terminals
- Flange 75 x 75 mm
- Nickel plated contacts
- Protection degree IP44

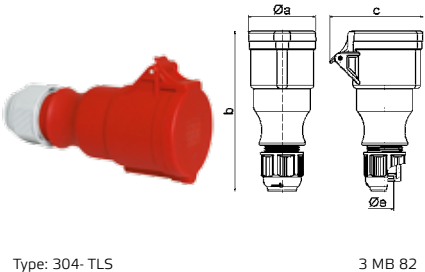


Type: 2815

A	16	16	16	32	32	32	A	P	V	Art. No.	Qty
P	3	4	5	3	4	5					
a	75,0	75,0	75,0	75,0	75,0	75,0	16	3	230	2817	10
b	75,0	75,0	75,0	75,0	75,0	75,0					
c	60,0	60,0	60,0	60,0	60,0	60,0	16	4	400	2831	10
d	60,0	60,0	60,0	60,0	60,0	60,0					
e Ø	5,5	5,5	5,5	5,5	5,5	5,5	16	5	400	2814	10
f	7,0	7,0	7,0	7,0	7,0	7,0					
h	43,0	43,0	43,0	53,0	53,0	53,0	32	3	230	2827	10
i	24,0	24,0	24,0	30,0	30,0	30,0					
k Ø	42,0	48,0	61,0	57,0	57,0	57,0	32	4	400	2830	10
l	-	-	5,0	2,0	2,0	-					
m	30,0	30,0	25,0	28,0	28,0	30,0	32	5	400	2815	10

TLS Connector with Multi-Grip

- Screw terminals
- Cable gland Multi-Grip system
- One-piece housing
- Protection degree IP44

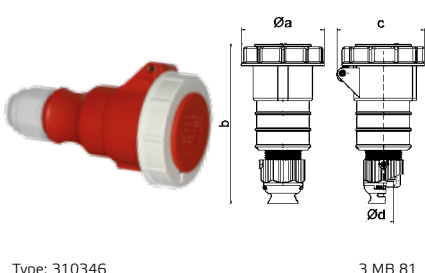


Type: 304-TLS

A	16	16	16	32	32	32	A	P	V	Art. No.	Qty
P	3	4	5	3	4	5					
a Ø	51,0	58,0	65,0	67,0	67,0	73,0	16	3	230	31001-TLS	10
b	145,0	148,0	156,0	185,0	185,0	185,0					
c	74,0	84,0	90,0	94,0	94,0	102,0	16	4	400	31005-TLS	10
e Ø	18,0	18,0	18,0	23,0	23,0	23,0	16	5	400	303-TLS	10
							32	3	230	31013-TLS	10
							32	4	400	31017-TLS	10
							32	5	400	304-TLS	10

TLS Connector with Multi-Grip

- Screw terminals
- Nickel plated contacts
- Cable gland Multi-Grip system
- One-piece housing
- Protection degree IP67



Type: 310346

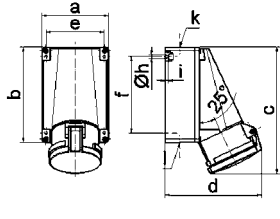
A	16	16	16	32	32	32	A	P	V	Art. No.	Qty
P	3	4	5	3	4	5					
a Ø	70,5	78,0	86,5	94,0	94,0	101,5	16	3	230	310333	10
b	154,0	155,0	160,0	190,0	190,0	190,0	16	4	400	310340	10
c	77,0	83,0	93,0	99,0	107,0	107,0					
e Ø	18,0	18,0	18,0	23,0	23,0	23,0	16	5	400	310346	10
							32	3	230	310351	10
							32	4	400	310358	10
							32	5	400	310364	10

Surface Mounting Socket Outlet

- Screw or screwless terminals
- Nickel plated contacts
- Kontex Plus with box terminals
- Without pilot-contact, with pilot-contact add „P” to the art. no.
- Protection degree IP44



Type: 110383



1 MB 4

A	63	63
a	118,0	118,0
b	170,0	170,0
c	223,0	223,0
d	168,0	168,0
e	104,0	104,0
f	136,0	136,0
h	6,1	6,1
i	6,0	6,0
k	M40	M40
l	M32/32	M32/32

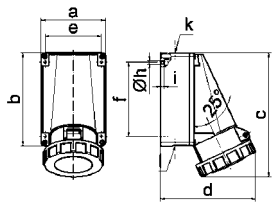
Execution	A	P	V	Art. No.	Qty
QUICKCONNECT	63	4	400	<u>110415</u>	5
QUICKCONNECT	63	5	400	<u>110383</u>	5
screw	63	3	230	<u>1104</u>	5
screw	63	4	400	<u>1127</u>	5
screw	63	5	400	<u>1124</u>	5

Surface Mounting Socket Outlet

- Screw or screwless terminals
- Nickel plated contacts
- Without pilot-contact, with pilot-contact add „P” to the art.no.
- Protection degree IP67



Type: 110413



1 MB 3/20

A	63	125
a	118,0	160,0
b	170,0	260,0
c	228,0	330,0
d	176,0	168,0
e	104,0	140,0
f	136,0	240,0
h	6,1	8,3
i	6,0	10,0
k	M40	M50
l	M32/32	-

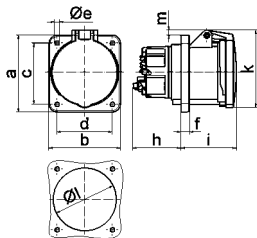
Execution	A	P	V	Art. No.	Qty
QUICKCONNECT	63	5	400	<u>110413</u>	5
screw	63	3	230	<u>1157</u>	5
screw	63	4	400	<u>1161</u>	5
screw	63	5	400	<u>1112</u>	5
screw	125	3	230	<u>11437</u>	1
screw	125	4	400	<u>11441</u>	1
screw	125	5	400	<u>11447</u>	1

Panel Mounting Socket Outlet

- Straight
- Screw or screwless terminals
- High temperature resistant contact carrier
- Flange 107 x 100 mm
- Without pilot-contact, with pilot-contact add „P” to the art. no.
- Protection degree IP44



Type: 130114



4 MB 265

A	63	63
E	QC	screw
a	107,0	107,0
b	100,0	100,0
c	85,0	85,0
d	77,0	77,0
e	6,5	6,5
f	12,0	12,0
h	67,0	56,5
i	77,0	77,0
k	110,0	110,0
l	88,0	88,0
m	7,0	7,0

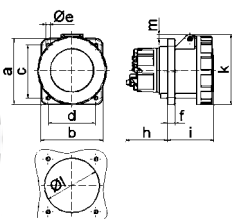
Execution	A	P	V	Art. No.	Qty
QUICKCONNECT	63	4	400	<u>130130</u>	5
QUICKCONNECT	63	5	400	<u>130114</u>	5
screw	63	3	230	<u>1307</u>	5
screw	63	4	400	<u>134</u>	5
screw	63	5	400	<u>136</u>	5

Panel Mounting Socket Outlet

- Straight
- Screw or screwless terminals
- High temperature resistant contact carrier
- Flange 107 x 100 mm
- Without pilot-contact, with pilot-contact add „P” to the art. no.
- Protection degree IP67



Type: 130119



4 MB 267/55

A	63	63	125
P	QC	screw	screw
a	107,0	107,0	120,0
b	100,0	100,0	120,0
c	85,0	85,0	100,0
d	77,0	77,0	100,0
e	6,5	6,5	6,5
f	12,0	12,0	21,0
h	67,0	56,5	50,0
i	76,0	76,0	117,0
k	113,0	113,0	129,0
l	88,0	88,0	104,0
m	7,0	7,0	6,0

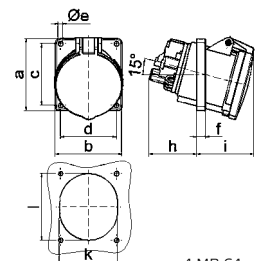
Execution	A	P	V	Art. No.	Qty
QUICKCONNECT	63	5	400	<u>130119</u>	5
screw	63	3	230	<u>1396</u>	5
screw	63	4	400	<u>13100</u>	5
screw	63	5	400	<u>13104</u>	5
screw	125	3	230	<u>13452</u>	5
screw	125	4	400	<u>13447</u>	5
screw	125	5	400	<u>13451</u>	5

Panel Mounting Socket Outlet

- Angled
- Screw or screwless terminals
- High temperature resistant contact carrier
- Flange 100 x 92 mm
- Without pilot-contact, with pilot-contact add „P” to the art. no.
- Protection degree IP44



Type: 120273



4 MB 64

A	63	63	63
P	3	4	5
a	100,0	100,0	100,0
b	92,0	92,0	92,0
c	85,0	85,0	85,0
d	77,0	77,0	77,0
e	6,5	6,5	6,5
f	12,0	12,0	12,0
h	65,0	65,0	65,0
i	81,0	81,0	81,0
k	80,0	80,0	80,0
l	92,0	92,0	92,0

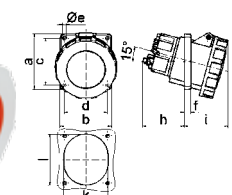
Execution	A	P	V	Art. No.	Qty
QUICKCONNECT	63	5	400	<u>120273</u>	5
screw	63	3	230	<u>12563</u>	10
screw	63	4	400	<u>12074</u>	10
screw	63	5	400	<u>12567</u>	10

Panel Mounting Socket Outlet

- Angled
- Screw or screwless terminals
- High temperature resistant contact carrier
- Flange 100 x 92 mm (at 63A)
- Flange 114 x 114 mm (at 125A)
- Without pilot-contact, with pilot-contact add „P” to the art. no.
- Protection degree IP67



Type: 120274



4 MB 268

A	63	63	125
P	QC	3-5	3/5
a	100,0	100,0	114,0
b	92,0	92,0	114,0
c	85,0	85,0	90,0
d	77,0	77,0	90,0
e	6,5	6,5	6,5
f	12,0	12,0	12,0
h	74,0	65,0	82,0
i	80,0	80,0	90,0
k	80,0	80,0	92,0
l	92,0	92,0	105,0

Execution	A	P	V	Art. No.	Qty
QUICKCONNECT	63	4	400	<u>120320</u>	5
QUICKCONNECT	63	5	400	<u>120274</u>	5
screw	63	3	230	<u>12569</u>	10
screw	63	4	400	<u>12570</u>	10
screw	63	5	400	<u>12574</u>	10
screw	125	3	230	<u>12100</u>	5
screw	125	5	400	<u>12108</u>	5

63A and 125A

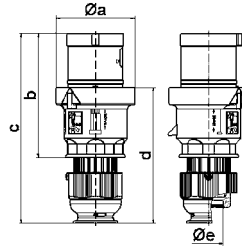
Voltages and frequencies not listed here available on request

TE Plug with Multi-Grip

- Screw or screwless terminals
- Nickel plated contacts
- Cable gland Multi-Grip system
- Housing connection with thread and snap-in lock
- Protection degree IP44



Type: 210765



2 MB 158

A	63
P	3/4/5
a Ø	96,0
b	153,0
c	233,0
d	167,0
e Ø	36,0

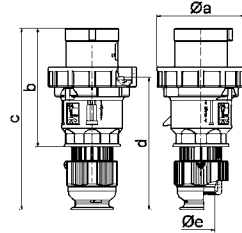
Execution	A	P	V	Art. No.	Qty
QUICK-CONNECT™	63	4	400	<u>210761</u>	5
QUICK-CONNECT™	63	5	400	<u>210765</u>	5
screw	63	3	230	<u>2104</u>	5
screw	63	4	400	<u>2151</u>	5
screw	63	5	400	<u>2155</u>	5

TE Plug with Multi-Grip

- Screw or screwless terminals
- High temperature resistant contact carrier
- Nickel plated contacts
- Cable gland Multi-Grip system
- Housing connection with thread and snap-in lock
- Protection degree IP67



Type: 210766



2 MB 159

A	63	125
P	3/4/5	3/4/5
a Ø	113,5	126,0
b	153,0	181,0
c	233,0	282,0
d	171,0	206,0
e Ø	36,0	50,0

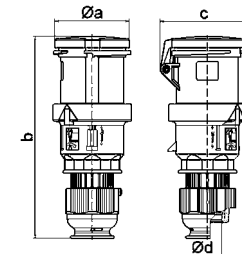
Execution	A	P	V	Art. No.	Qty
QUICK-CONNECT™	63	5	400	<u>210766</u>	5
screw	63	3	230	<u>2181</u>	5
screw	63	4	400	<u>2185</u>	5
screw	63	5	400	<u>2189</u>	5
screw	125	3	230	<u>2191</u>	5
screw	125	4	400	<u>2195</u>	5
screw	125	5	400	<u>2199</u>	5

Quick-Connect Connector with Multi-Grip

- Screw or screwless terminals
- Nickel plated contacts
- Cable gland Multi-Grip system
- Housing connection with thread and snap-in lock
- Without pilot-contact, with pilot-contact add „P“ to the art. no.
- Protection degree IP44



Type: 310494



3 MB 107

A	63
P	3/4/5
a Ø	95,0
b	251,0
c	109,0
d Ø	36,0

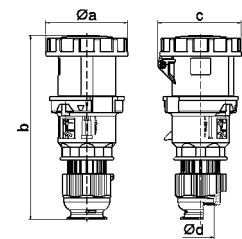
Execution	A	P	V	Art. No.	Qty
QUICK-CONNECT™	63	4	400	<u>310490</u>	5
QUICK-CONNECT™	63	5	400	<u>310494</u>	5
screw	63	3	230	<u>3104</u>	5
screw	63	4	400	<u>3151</u>	5
screw	63	5	400	<u>3112</u>	5

TE Connector with Multi-Grip

- Screw or screwless terminals
- High temperature resistant contact carrier
- Nickel plated contacts
- Cable gland Multi-Grip system
- Housing connection with thread and snap-in lock
- Without pilot-contact, with pilot-contact add „P“ to the art. no.
- Protection degree IP67



Type: 310495



3 MB 109

A	63	125
P	3/4/5	3/4/5
a Ø	110,0	125,0
b	251,0	295,0
c	113,0	128,0
d Ø	36,0	50,0

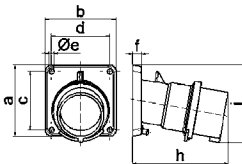
Execution	A	P	V	Art. No.	Qty
QUICK-CONNECT™	63	5	400	<u>310495</u>	5
screw	63	3	230	<u>3181</u>	5
screw	63	4	400	<u>3185</u>	5
screw	63	5	400	<u>3124</u>	5
screw	125	3	230	<u>3191</u>	5
screw	125	4	400	<u>3195</u>	5
screw	125	5	400	<u>3199</u>	5

Panel Mounting Appliance Inlet

- Screw terminals
- High temperature resistant contact carrier
- Nickel plated contacts
- Box terminals
- Flange 107 x 100 mm (63A)
- Protection degree IP44



Type: 2781



5 MB 21

A	63
P	3/4/5
a	107,0
b	100,0
c	85,0
d	77,0
e Ø	6,5
f	12,0
h	155,0
i	118,0

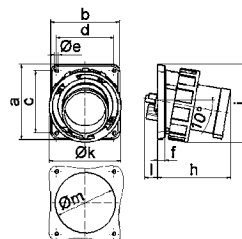
A	P	V	Art. No.	Qty
63	3	230	<u>2771</u>	5
63	4	400	<u>2775</u>	5
63	5	400	<u>2781</u>	5

Panel Mounting Appliance Inlet

- Screw terminals
- High temperature resistant contact carrier
- Nickel plated contacts
- Box terminals
- Flange 107 x 100 mm (63A)
- Flange 130 x 120 mm (125A)
- Protection degree IP67



Type: 2744



5 MB 56/22

A	63	125
P	3/4/5	3/4/5
a	107,0	130,0
b	100,0	120,0
c	85,0	108,0
d	77,0	100,0
e Ø	6,5	6,5
f	12,0	13,0
h	155,0	130,0
i	118,0	135,0
k	113,5	126,0
l	-	23,0
m Ø	-	105,0

A	P	V	Art. No.	Qty
63	3	230	<u>27007</u>	5
63	4	400	<u>27011</u>	5
63	5	400	<u>27017</u>	5
125	3	230	<u>2736</u>	5
125	4	400	<u>2740</u>	5
125	5	400	<u>2744</u>	5



Quick-Connect Phase Inverter with Multi-Grip

- Screwless terminals
- Nickel plated contacts
- Cable gland Multi-Grip system
- Housing connection with thread and snap-in lock
- Protection degree IP44



A	P	V	Art. No.
16	4	400	22053
16	5	400	225
32	4	400	22055
32	5	400	227

Type: 227



Surface Mounting Socket Outlet 7-pole

- Screw terminals
- High temperature resistant contact carrier
- Nickel plated contacts
- Cable entry 1 x at top (opened), 2 x at bottom (closed)
- Base rotatable by 180°
- Protection degree IP44

A	P	V	Art. No.
16	7	230	11480
16	7	400	11481
32	7	230	11482
32	7	400	11483

Type: 11483



Phase Inverter with Multi-Grip

- Screw terminals
- High temperature resistant contact carrier
- Nickel plated contacts
- Cable gland Multi-Grip system
- Protection degree IP44



A	P	V	Art. No.
16	5	230	2286
16	5	400	2271
32	5	230	2287
32	5	400	2288

Type: 2288



Panel Mounting Socket Outlet 7-pole

- Straight
- Screw terminals
- High temperature resistant contact carrier
- Nickel plated contacts
- Flange 75 x 75 mm
- Drill holes 60 x 60 mm
- Protection degree IP44

A	P	V	Art. No.
16	7	230	13326
16	7	400	13327
32	7	230	13328
32	7	400	13329

Type: 13329



Phase Inverter with Multi-Grip

- Screw terminals
- High temperature resistant contact carrier
- Nickel plated contacts
- Cable gland Multi-Grip system
- Protection degree IP67



A	P	V	Art. No.
16	5	230	2266
16	5	400	2251
32	5	230	2267
32	5	400	2252

Type: 2251



Plug 7-pole with Multi-Grip

- Screw terminals
- High temperature resistant contact carrier
- Nickel plated contacts
- Cable gland Multi-Grip system
- Protection degree IP44

A	P	V	Art. No.
16	7	230	210550
16	7	400	21557
32	7	230	210636
32	7	400	210067

Type: 210067



Phase Inverter - Surface Mounting Appliance Inlet

- Screw terminals
- High temperature resistant contact carrier
- Nickel plated contacts
- Protection degree IP44



A	P	V	Art. No.
16	5	230	24208
16	5	400	24209
32	5	230	24210
32	5	400	24211

Type: 24209



Connector 7-pole with Multi-Grip

- Screw terminals
- High temperature resistant contact carrier
- Nickel plated contacts
- Cable gland Multi-Grip system
- Protection degree IP44

A	P	V	Art. No.
16	7	230	310311
16	7	400	31752
32	7	230	310381
32	7	400	310123

Type: 310123

Domestic-Type system D, DK, GB, F



Domestic Panel Mounting Socket Outlet

- Screw terminals
- Hinged lid and injected flange gasket (E,F)
- Nickel plated contacts (E, F, K)
- Protection degree IP54

Earthing Type	Country - System	Colour	Art. No.	Qty
Germany	F	blue	71094	10
Germany	F	grey	71095	10
Belgium/France	E	blue	7139	10
Belgium/France	E	grey	7142	10
Denmark	K	blue	71071	
UK	G	blue	71142	



Domestic Panel Mounting Socket Outlet

- Screwless terminals
- Hinged lid and injected flange gasket
- Nickel plated contacts
- Protection degree IP54

Earthing Type	Country - System	Colour	Art. No.	Qty
Germany	F	blue	71099	10
Germany	F	grey	71100	10
Belgium/France	E	blue	71118	10
Belgium/France	E	grey	71119	10



Domestic Panel Mounting Socket Outlet

- Screw terminals
- Protection degree IP68
- Nickel plated contacts

Earthing Type	Country - System	Colour	Art. No.	Qty
Germany	F	blue	7112	10
Germany	F	grey	7119	10
Belgium/France	E	blue	7153	10
Belgium/France	E	grey	71028	10

Type: 7112



Domestic Interlocked Mounting Socket Outlet

- Switched and electrical interlocked
- Protection degree IP67
- Nickel plated contacts

Earthing Type	Country - System	Colour	Art. No.	Qty
Germany	F	blue	76100	1

Type: 76100



Domestic Plug

- Cable gland Multi-Grip system
- Spacious connection area
- Double earthing system (E/F)
- Protection degree IP44
- Nickel plated contacts

Earthing Type	Country - System	Colour	Art. No.	Qty
Germany	F	blue	7370	20
Belgium/France	E	blue		
Germany	F	grey	7371	20
Belgium/France	E	grey		
Germany	F	black	7372	20
Belgium/France	E	black		
Germany	F	red	7373	20
Belgium/France	E	red		



Domestic Plug

- Closure cap
- Nickel plated contacts
- With cable gland
- Double earthing system (E/F)
- Protection degree IP68

Earthing Type	Country - System	Colour	Art. No.	Qty
Germany	F	blue	736	10
Belgium/France	E	blue		
Germany	F	grey	737	10
Belgium/France	E	grey		

Type: 736



Domestic Connector

- Cable gland Multi-Grip system
- Spacious connection area
- Optional child protection
- Protection degree IP54
- Nickel plated contacts

Earthing Type	Country - System	Colour	Art. No.	Qty
Germany	F	blue	7486	20
Germany	F	grey	7487	20
Germany	F	black	7488	20
Germany	F	red	7489	20
Belgium/France	E	blue	7490	20
Belgium/France	E	grey	7491	20
Belgium/France	E	black	7492	20
Belgium/France	E	red	7493	20



Domestic Connector

- Nickel plated contacts
- With cable gland
- Protection degree IP68

Earthing Type	Country - System	Colour	Art. No.	Qty
Germany	F	blue	746	10
Germany	F	grey	747	10
Belgium/France	E	blue	7416	10
Belgium/France	E	grey	7455	10

Type: 746



Type: 410




Type: 417


Surface Mounting Socket Outlet

- Screw terminals
- Nickel plated contacts
- Cable entry one at top (open) and two at bottom (closed)
- Base rotatable by 180°
- Protection degree IP44

A	P	V	Art. No.	A	P	V	Art. No.
16	2	24	410	32	2	24	4111
16	3	24	416	32	3	24	4117
16	2	42	411	32	2	42	4112
16	3	42	417	32	3	42	4118



Type: 4354




Type: 4372


Panel Mounting Socket Outlet

- Straight
- Screw terminals
- Nickel plated contacts
- Flange 75 x 75 mm
- Protection degree IP44

A	P	V	Art. No.	A	P	V	Art. No.
16	2	24	4354	32	2	24	4365
16	3	24	4360	32	3	24	4371
16	2	42	4355	32	2	42	4366
16	3	42	4361	32	3	42	4372



Type: 4422



Type: 4440

Plug

- Screw terminals
- Nickel plated contacts
- Cable gland Multi-Grip system
- Protection degree IP44

A	P	V	Art. No.	A	P	V	Art. No.
16	2	24	4422	32	2	24	4433
16	3	24	4428	32	3	24	4439
16	2	42	4423	32	2	42	4434
16	3	42	4429	32	3	42	4440



Type: 4522



Type: 4540

Connector

- Screw terminals
- Nickel plated contacts
- Cable gland Multi-Grip system
- Protection degree IP44

A	P	V	Art. No.	A	P	V	Art. No.
16	2	24	4522	32	2	24	4533
16	3	24	4528	32	3	24	4539
16	2	42	4523	32	2	42	4534
16	3	42	4529	32	3	42	4540

Surface Mounting Socket Outlet Switched and Interlocked / Switched, Interlocked and fused *



Type: 16603

Surface Mounting Socket Outlet

- Switched/ interlocked
- Nickel plated contacts
- With mech. double interlocking
- In 0-position lockable (with padlock)
- Protection degree IP44

A	P	h	V	Art. No.	A	P	h	V	Art. No.
16	3	6	230	1619	32	4	6	400	16042
16	4	6	400	16038	32	5	6	400	16043
16	5	6	400	16039	63	4	6	400	16605
					63	5	6	400	16603



Type: 16602

Surface Mounting Socket Outlet

- Switched/ interlocked
- Nickel plated contacts
- With mech. double interlocking
- In 0-position lockable (with padlock)
- Protection degree IP67

A	P	h	V	Art. No.	A	P	h	V	Art. No.
16	3	6	230	160048	32	4	6	400	160178
16	4	6	400	16040	32	5	6	400	160177
16	5	6	400	16041	63	4	6	400	16604
					63	5	6	400	16602




Type: 17524

Surface Mounting Socket Outlet

- Switched/ interlocked/ fused
- In 0-position lockable (with padlock)
- Nickel plated contacts
- With C-type MCB and RCCB 40/0.03A for 16A and 32A
- With D02 and RCCB 63/0.03A for 63A
- Protection degree IP44

A	P	h	V	Art. No.	A	P	h	V	Art. No.
16	4	6	400	17323	63	4	6	400	17536
16	5	6	400	17343	63	5	6	400	17537
32	4	6	400	17325					
32	5	6	400	17344					



Type: 17554

Surface Mounting Socket Outlet

- Switched/ interlocked/ fused
- In 0-position lockable (with padlock)
- Nickel plated contacts
- With C-type MCB and RCCB 40/0.03A for 16A and 32A
- With D02 and RCCB 63/0.03A for 63A
- Protection degree IP67

A	P	h	V	Art. No.	A	P	h	V	Art. No.
16	4	6	400	17329	63	4	6	400	17553
16	5	6	400	17345	63	5	6	400	17554
32	4	6	400	17331					
32	5	6	400	17346					

Reefer Container Plugs and Sockets

DNV-GL



TE Panel Mounting Socket Outlet

- Straight
- Screw terminals
- High temperature resistant contact carrier
- Nickel plated contacts
- Protection degree IP67

A	P	V	h	Art. No.
32	4	400	3	13021

Type: 13021

DNV-GL



Quick-Connect Surface Mounting Socket Outlet

- Screwless terminals
- High temperature resistant contact carrier
- Nickel plated contacts
- Protection degree IP67

A	P	V	h	Art. No.
32	4	400	3	11556

Type: 11556

DNV-GL



TE Surface Mounting Socket Outlet

- Switched
- With mech. double interlocking
- High temperature resistant contact carrier
- Nickel plated contacts
- Protection degree IP67

A	P	V	h	Art. No.
32	4	400	3	16050

Type: 16050

DNV-GL



TE Surface Mounting Socket Outlet

- Switched
- With mech. double interlocking
- High temperature resistant contact carrier
- Nickel plated contacts
- Protection degree IP67

A	P	V	h	Art. No.
32	4	400	3	17026

Type: 17026

DNV-GL
* type 21485



TE Plug with Multi-Grip

- Screw or screwless terminals
- High temperature resistant contact carrier
- Nickel plated contacts
- Cable gland Multi-Grip system
- Protection degree IP67

Execution	A	P	V	h	Art. No.
screwless terminals	32	4	400	3	2148509

Type: 21485

DNV-GL
* type 31423



TE Connector with Multi-Grip

- Screw or screwless terminals
- High temperature resistant contact carrier
- Nickel plated contacts
- Cable gland Multi-Grip system
- Protection degree IP67

Execution	A	P	V	h	Art. No.
screwless terminals	32	4	400	3	310426

Type: 31423

Plug with Multi-Grip

- Screw terminals
- Nickel plated contacts
- Cable gland Multi-Grip system
- One-piece housing
- Protection degree IP67



A	P	V	h	Art. No.
32	4	400	3	210824

Type: 210824

Connector with Multi-Grip

- Screw terminals
- Nickel plated contacts
- Cable gland Multi-Grip system
- One-piece housing
- Protection degree IP67



A	P	V	h	Art. No.
32	4	400	3	310567

Type: 310567

Combination Units

TK-Kombi-Socket



Type: 1010

- With terminals and wiring (ready for installation)
- With integrated domestic socket outlet 16A 230V ~ (system F - german earthing System)
- Protection degree IP44

A	P	V	execution	Art. No.
16	5	400		1010
16	5	400	with fuse holder 5 x 20 mm DIN 41671	109
32	5	400	with fuse holder 5 x 20 mm DIN 41671	1011

VARIABOX -S

IP44
130 x 230 mm



Type: 89004

Components:

- 2 domestic sockets 16A, 230V ~ (system F - german earthing System)
- 1 CEE socket 16A, 400V, 5p

Cable entry at top and bottom:

each with 1x M12, 1x M20, 2x M25

Connection option:

1 cable up to 5 x 6 mm²

Art. No. 89004

VARIABOX -M

IP44 - 260 x 230 mm



Type: 89010

Components:

- 2 domestic sockets 16A, 230V ~ (system F - german earthing System)
- 1 CEE socket 16A, 400V, 5p

Fuse:

- 2 C-type MCBs 16A, 1p
- 1 C-type MCB 16A, 3p
- 1 RCCB 40/0.03A, 4p

Cable entry at top and bottom:

each with 1x M12, 1x M20, 2x M40

Connection option:

2 cables up to 5 x 25 mm²

Art. No. 89010

VARIABOX -L

IP44 - 390 x 230 mm



Type: 89076

Components:

- 2 domestic sockets 16A, 230V ~ (system F - german earthing System)
- 1 CEE socket 16A, 400V, 5p
- 1 CEE socket 32A, 400V, 5p

Fuse:

- 2 C-type MCBs 16A, 1p
- 1 C-type MCB 16A, 3p
- 1 C-type MCB 32A, 3p
- 1 RCCB 40/0.03A, 4p

Cable entry at top and bottom:

each with 1x M12, 1x M20, 2x M40

Connection option:

2 cables up to 5 x 25 mm²

Art. No. 89076

VARIABOX -XL

IP44 - 520 x 230 mm



Type: 89095

Components:

- 2 domestic sockets 16A, 230V ~ (system F - german earthing System)
- 1 CEE socket 16A, 400V, 5p
- 1 CEE socket 32A, 400V, 5p
- 1 CEE socket 63A, 400V, 5p

Fuse:

- 2 C-type MCBs 16A, 1p
- 1 C-type MCB 16A, 3p
- 1 C-type MCB 32A, 3p
- 1 RCCB 63/0.03A, 4p

Cable entry at top and bottom:

each with 1x M12, 1x M20, 2x M40

Connection option:

cables up to 5 x 25 mm²

Art. No. 89095

VARIABOX -L DUO

IP44 - 390 x 460 mm



Type: 89987

Components:

- 10 domestic sockets 16A, 230V ~ (system F - german earthing System)
- 1 CEE socket 16A, 400V, 5p
- 1 CEE socket 32A, 400V, 5p

Fuse:

- 10 C-type MCBs 16A, 1p
- 1 C-type MCB 16A, 3p
- 1 C-type MCB 32A, 3p
- 1 RCCB 63/0.03A, 4p

Cable entry at top and bottom:

each with 1x M12, 1x M20, 2x M40

Connection option:

2 cables up to 5 x 25 mm²

Art. No. 89987

VARIABOX -XL

IP67 - 520 x 230 mm



Type: 890929

Components:

- 2 domestic sockets 16A, 230V ~ (system F - german earthing System)
- 1 CEE socket 16A, 400V, 5p
- 1 CEE socket 32A, 400V, 5p

Fuse:

- 2 C-type MCBs 16A, 1p
- 1 C-type MCB 16A, 3p
- 1 C-type MCB 32A, 3p
- 1 RCCB 40/0.03A, 4p

Cable entry at top and bottom:

each with 1x M12, 1x M20, 2x M40

Connection option:

2 cables up to 5 x 25 mm²

Art. No. 890929

VARIABOX -XXL

IP67 - 650 x 230 mm



Type: 890936

Components:

- 3 domestic sockets 16A, 230V ~ (system F - german earthing System)
- 2 CEE sockets 16A, 400V, 5p
- 1 CEE socket 32A, 400V, 5p

Fuse:

- 3 C-type MCBs 16A, 1p
- 2 C-type MCBs 16A, 3p
- 1 C-type MCB 32A, 3p
- 1 RCCB 63/0.03A, 4p

Cable entry at top and bottom:

each with 1x M12, 1x M20, 2x M40

Connection option:

2 cables up to 5 x 25 mm²

Art. No. 890936

Combination Units

MODBOX -Midi
384 x 255 mm
Rubber



Type: 5401884

Components:
6 domestic sockets 16A, 230V ~
(system F - german earthing System)

Fuse:
6 C-type MCBs 16A, 1p
1 RCCB 40/0.03A, 4p

Cable entry at top and bottom:
each with 2x M40

Connection option:
2 cables up to 5 x 25 mm²

Art. No. 5401884

MODBOX
420 x 300 mm
Rubber



Type: 5401274

Components:
2 domestic sockets 16A, 230V ~
(system F - german earthing System)
1 CEE socket 16A, 400V, 5p
1 CEE socket 32A, 400V, 5p

Fuse:
2 C-type MCBs 16A, 1p
1 C-type MCB 16A, 3p
1 C-type MCB 32A, 3p
1 RCCB 63/0.03A, 4p

Cable entry at top and bottom:
each with 2x M40

Connection option:
2 cables up to 5 x 25 mm²

Art. No. 5401274

Mobile combination unit
250 x 210 mm - portable
Rubber



Type: 522590

Components:
6 domestic sockets 16A, 230V ~
(system F - german earthing System)
2 CEE sockets 16A, 400V, 5p
1 CEE socket 32A, 400V, 5p
1 rotary field measuring device

Fuse:
3 C-type MCBs 16A, 1p
1 C-type MCB 16A, 3p
1 RCCB 40/0.03A, 4p

Cable entry/inlet:
CEE phase inverter 32A, 400V, 5p

Art. No. 522590

Mobile combination unit
320 x 245 mm - portable
Rubber



Type: 5202245

Components:
4 domestic sockets 16A, 230V ~
(system F - german earthing System)
2 CEE sockets 16A, 400V, 5p
2 CEE sockets 32A, 400V, 5p

Fuse:
2 C-type MCBs 16A, 1p
2 C-type MCBs 16A, 3p
2 C-type MCBs 32A, 3p
1 RCCB 63/0.03A, 4p

Cable entry/inlet:
CEE plug 63A, 400V, 5p with
cable 3 m H07RN-F5G10

Art. No. 5202245

Uni-Block
140 x 140 mm - portable



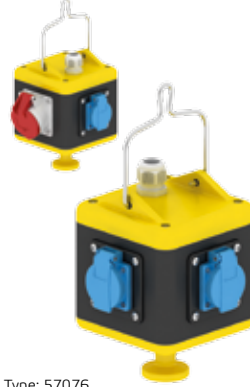
Type: 57148

Components:
2 domestic sockets 16A, 230V ~
(system F - german earthing System)
2 CEE sockets 16A, 400V, 5p

Cable entry/inlet:
CEE plug 16A, 400V, 5p with
cable 2 m H07RN-F5G2,5

Art. No. 57148

Uni-Block
140 x 140 mm - hanging



Type: 57076

Components:
3 domestic sockets 16A, 230V ~
(system F - german earthing System)
1 CEE socket 16A, 400V, 5p

Cable entry:
1x M25

Connection option:
1 cable up to 5 x 10 mm²

Art. No. 57076

Mobile combination unit
365 x 120 mm, portable



Type: 530003

Components:
2 domestic sockets 16A, 230V ~
(system F - german earthing System)
1 CEE socket 16A, 400V, 5p

Fuse:
2 C-type MCBs 16A, 1p
1 RCCB 40/0.03A, 4p

Cable entry/inlet:
CEE plug 16A, 400V, 5p with
cable 2 m H07RN-F5G2,5

Art. No. 530003

EVOBOX
by Bals



The new EVOBOX series

- Light and easy-to-handle, using hard Polyethylene
- Overall protection degree of the distributor is IP54
- High mechanical and thermal capacity
- Perfectly stackable
- Maintenance-free Quick-Connect technology for CEE and domestic sockets
- Available in 4 different sizes
- Fuse elements protected under robust operating window
- Available in 4 different sizes

Configuration on request



Bals Elektrotechnik GmbH & Co. KG
D-57399 Kirchhundem-Albaum
Phone: +49 27 23/711-0
Fax: +4927 23/771-177/178
E-mail: info@bals.com
Internet: www.bals.com